

# 2012 Groundfish Assessments Overview

New England Fishery Management  
Council

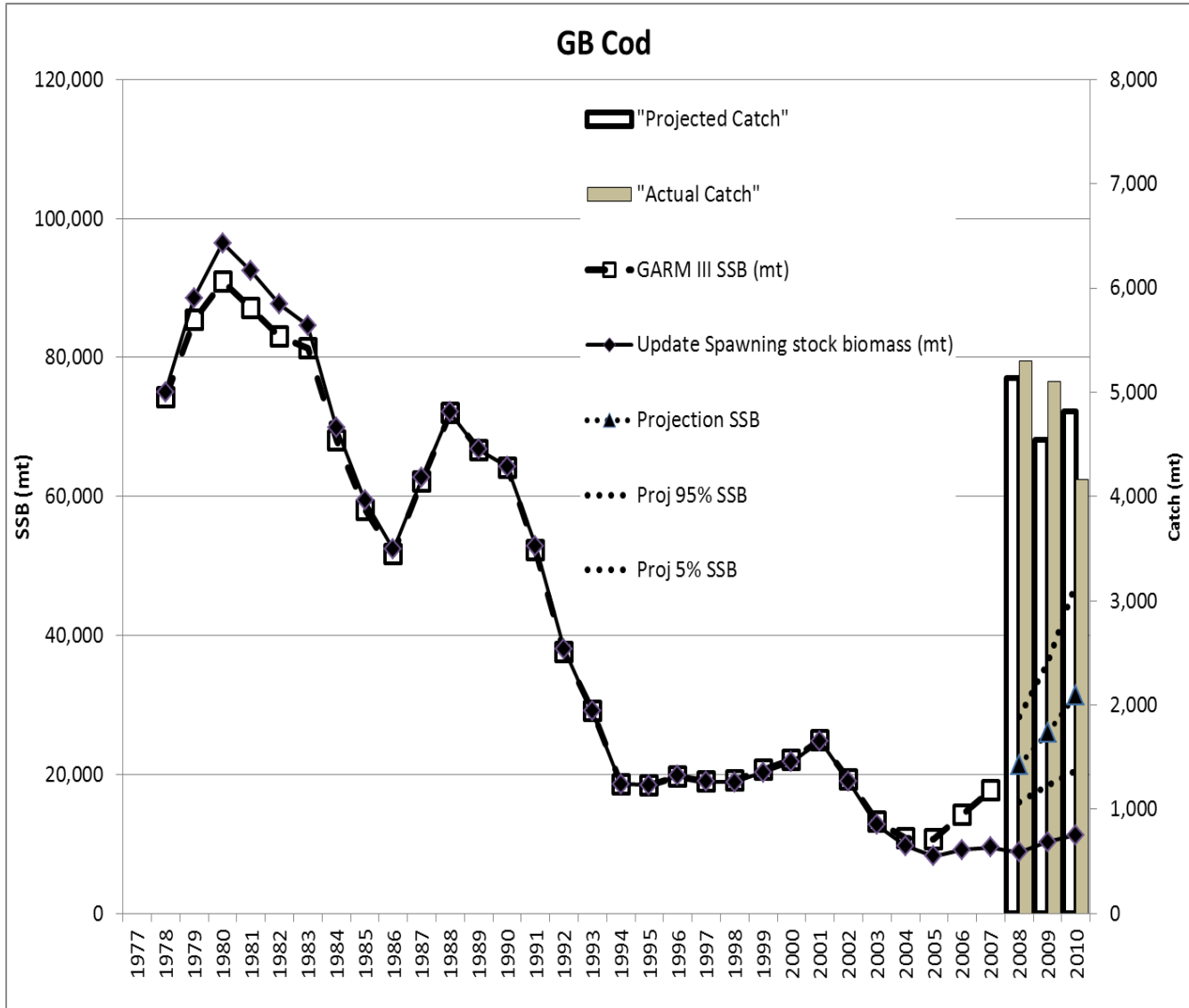
Groundfish Oversight Committee

March 29, 2012

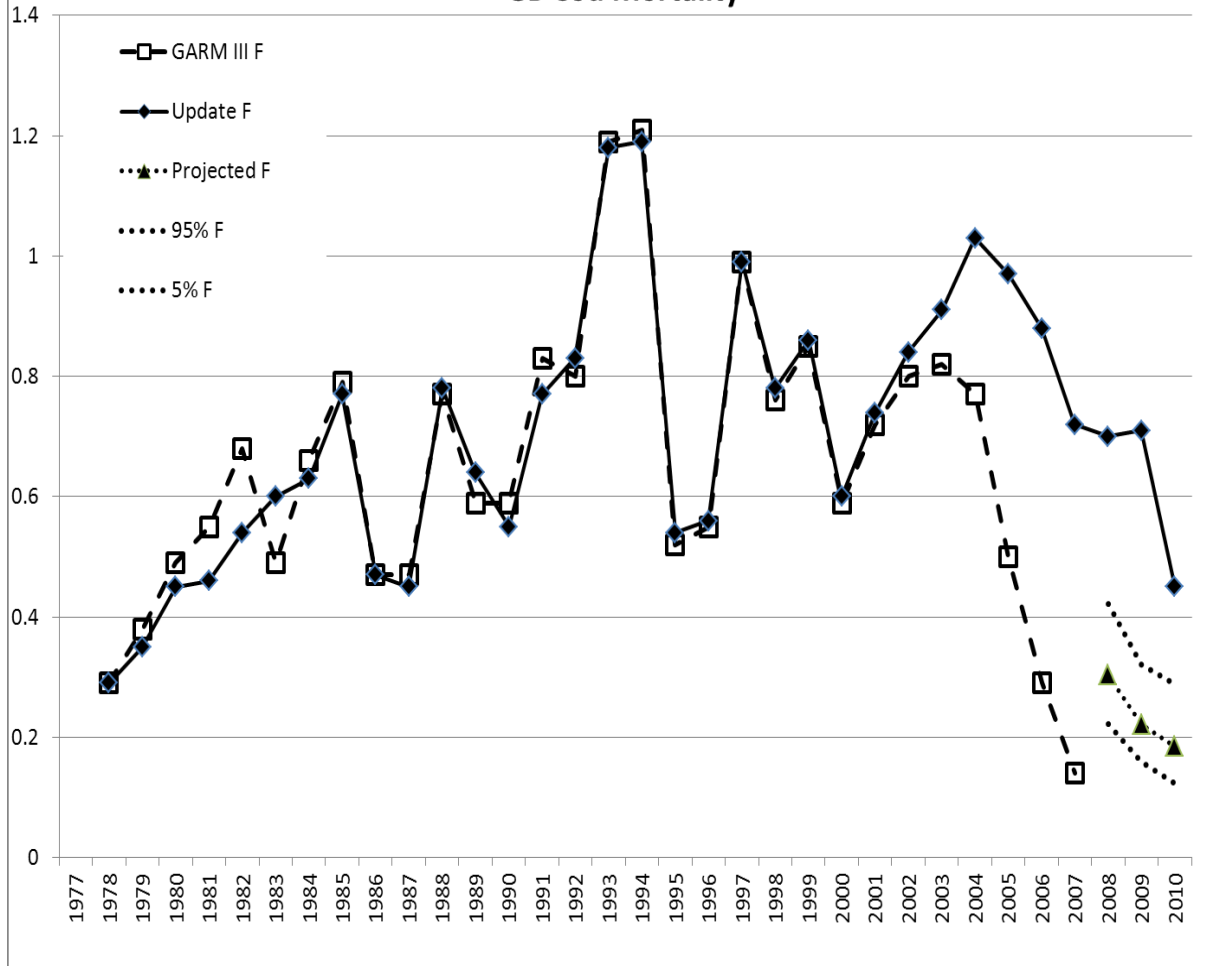
# Assessment Updates

- Operational assessments – not benchmarks
  - Data through 2010
  - GARM III models with minor tweaks
  - Updated reference points
- Integrated review panel
  - SSC: Dr. Steve Cadrin, Dr. Alexia Sharov, Steve Correia
  - NMFS NWFSC: Dr. Sandra Lowe

# Projection Performance



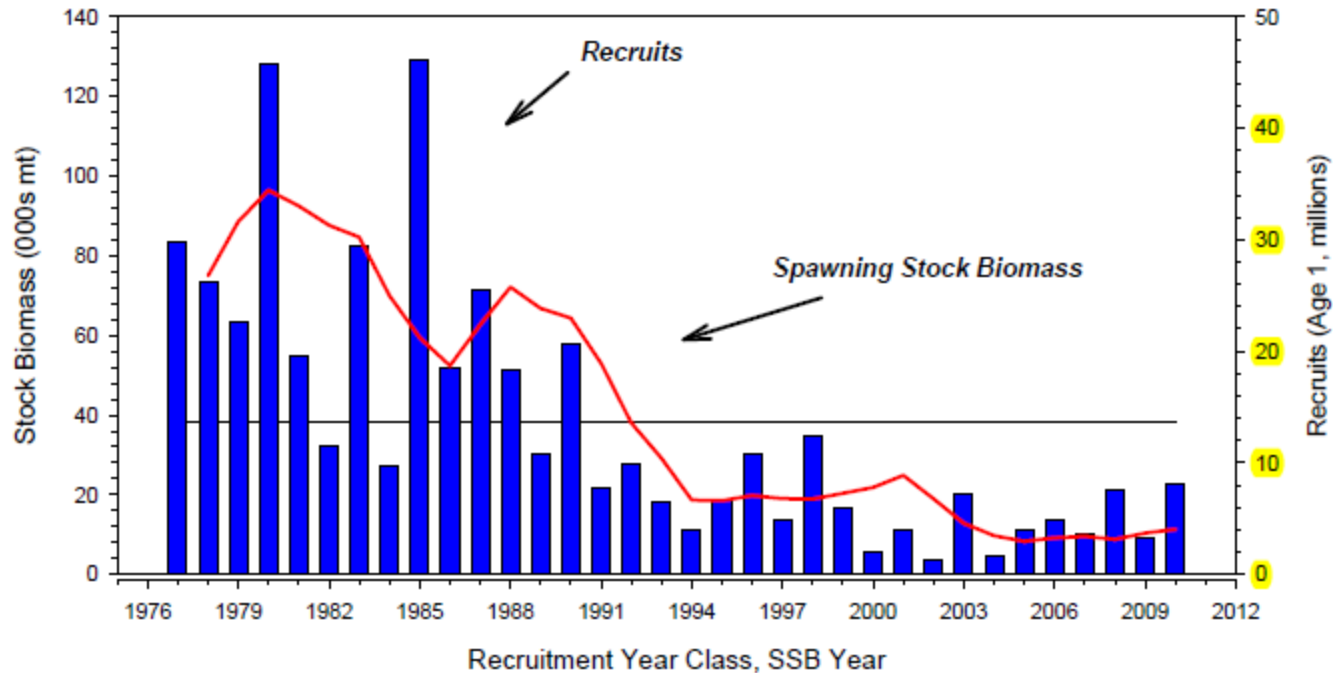
### GB Cod Mortality



# Retrospective Patterns

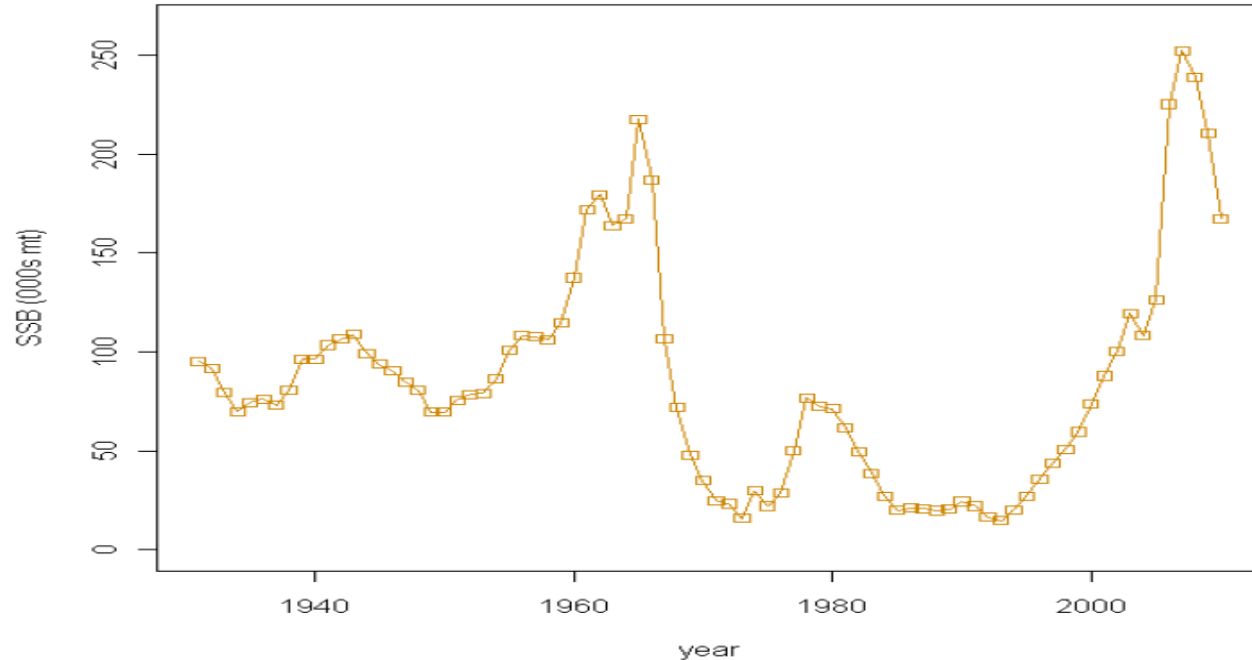
Stock	SSB	Fishing Mortality	Recruitment	Comments
<b>GB Cod</b>	<b>0.7059</b>	<b>-0.47</b>	<b>1.632</b>	<b>Survey time series split</b>
GB Haddock	0.2	-0.15	0.14	No adjustment
GOM haddock	-0.21	0.95	4.62	No adjustment
CC/GOM yellowtail flounder	0.68	-0.19	0.34	Rho-adjustment used for 2012 updates
Plaice	0.62	-0.35	1.24	Rho-adjustment used
<b>Witch Flounder</b>	<b>0.61</b>	<b>-0.33</b>	<b>0.06</b>	<b>Survey time series split</b>
Redfish	0.047	-0.045	0.742	No adjustment

# GB Cod



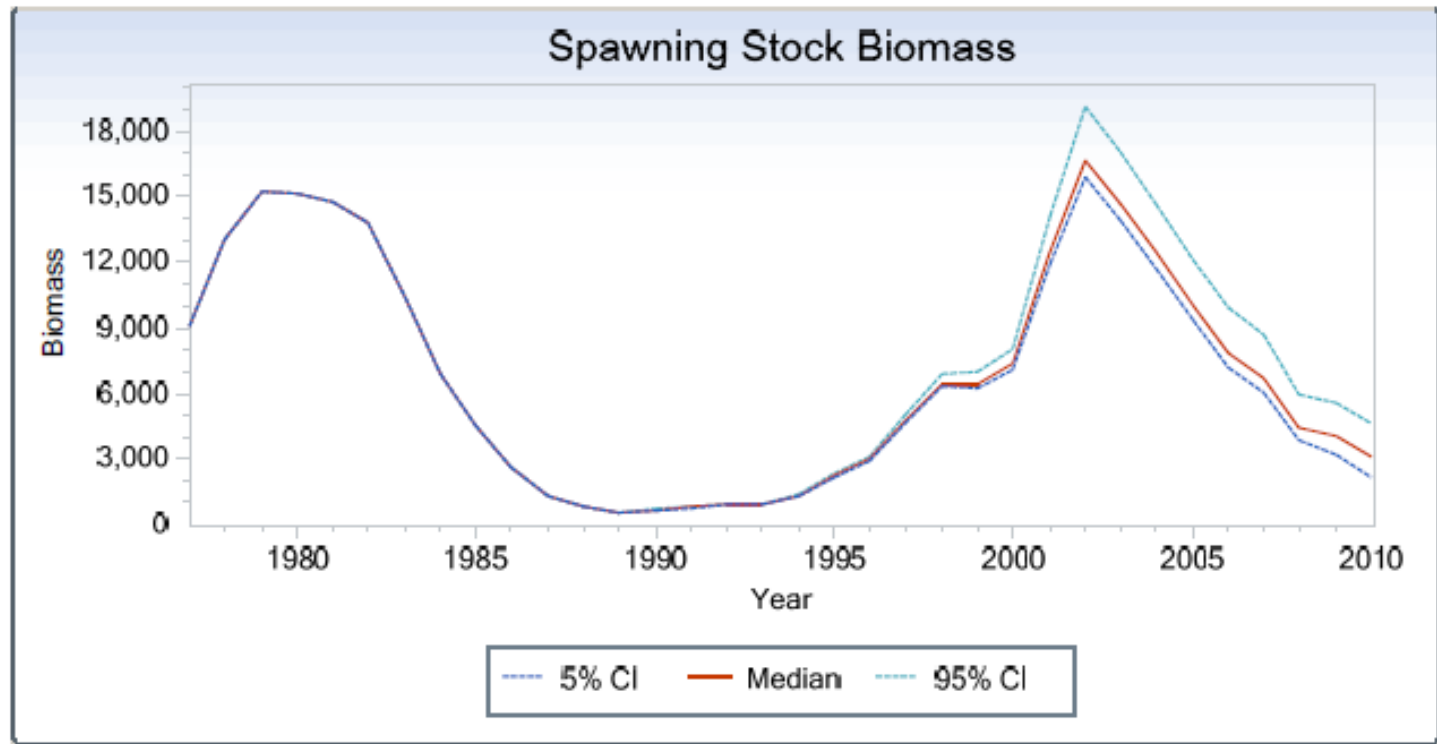
- Overfished – 8% of SSBMSY
- Overfishing – 195% of FMSY
- Retrospective pattern persists
- 2013 ABC: ~1,300 – 2,800 mt (combined US and Canada)

# GB Haddock



- Rebuilt – 134% of SSBMSY
- No overfishing – 46% of SSBMSY
- 2010 YC may be large
- 2013 ABC ~38,000 mt

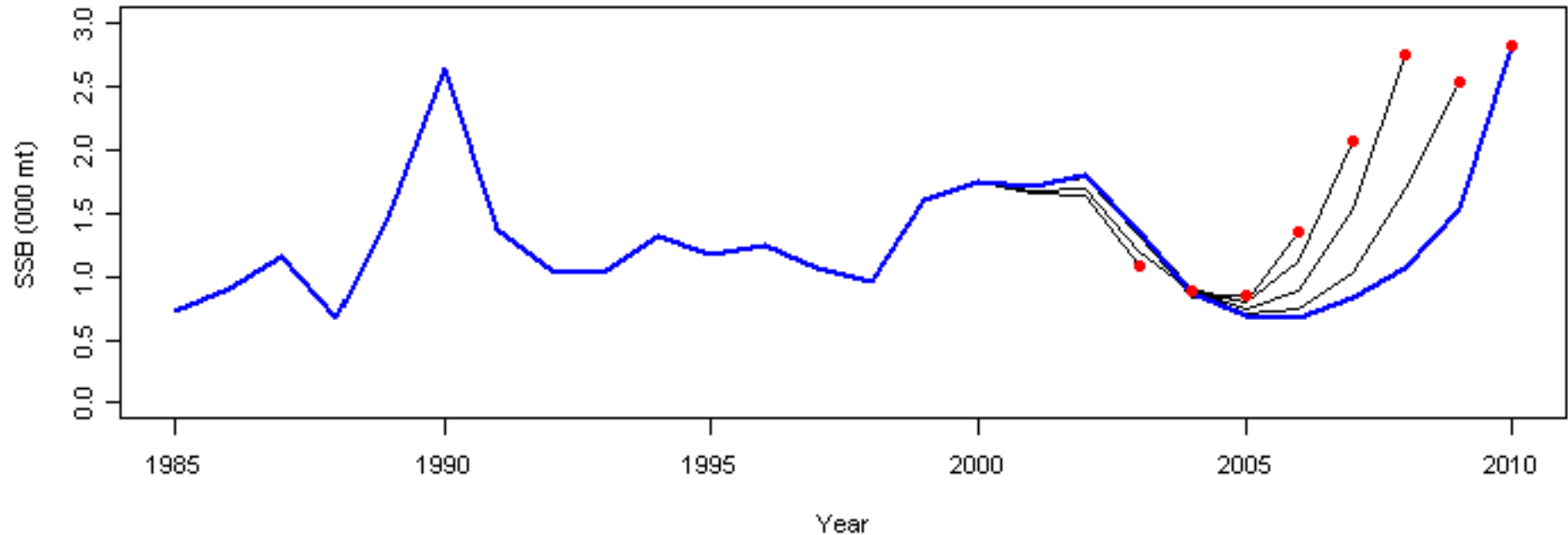
# GOM Haddock



- Not overfished: 58% of SSBMSY
- Overfishing: 178% of FMSY
- No change with MRIP
- 2013 ABC: ~250 mt

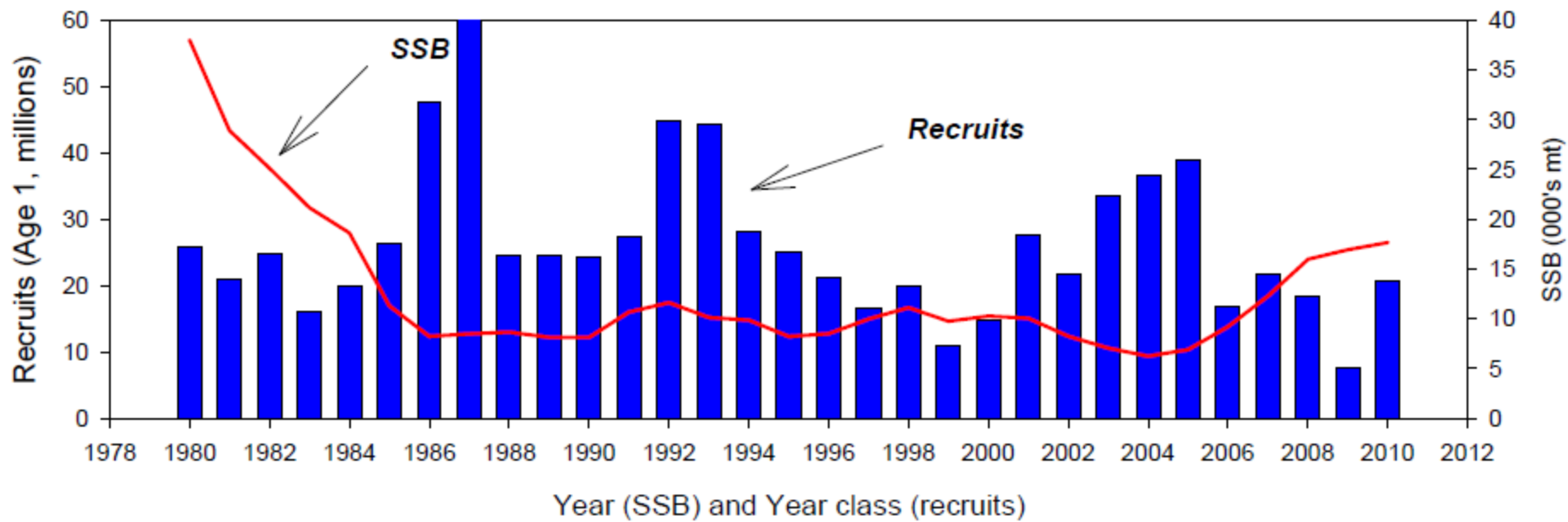


# CC/GOM Yellowtail Flounder



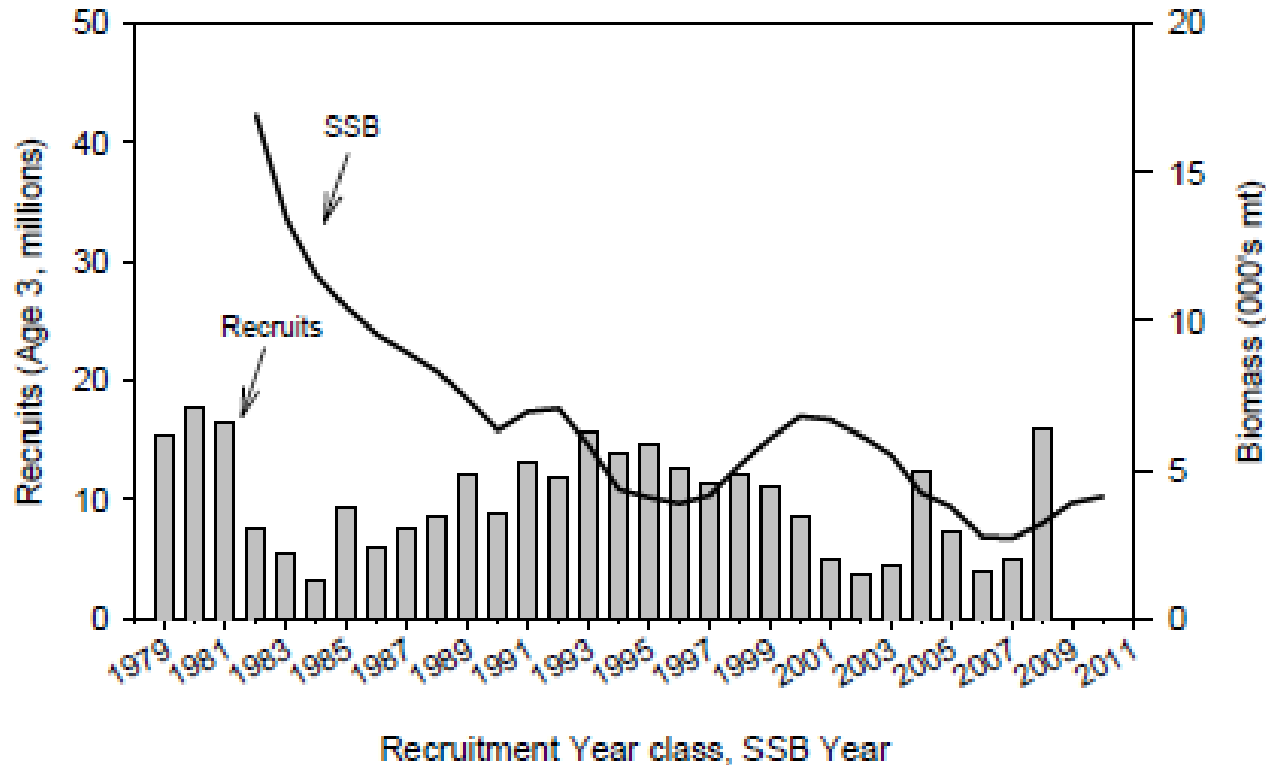
- Overfished: 24% of SSBMSY
- Overfishing: 138% of FMSY
- Retrospective pattern increased
- 2013 ABC: ~630 mt

# Plaice



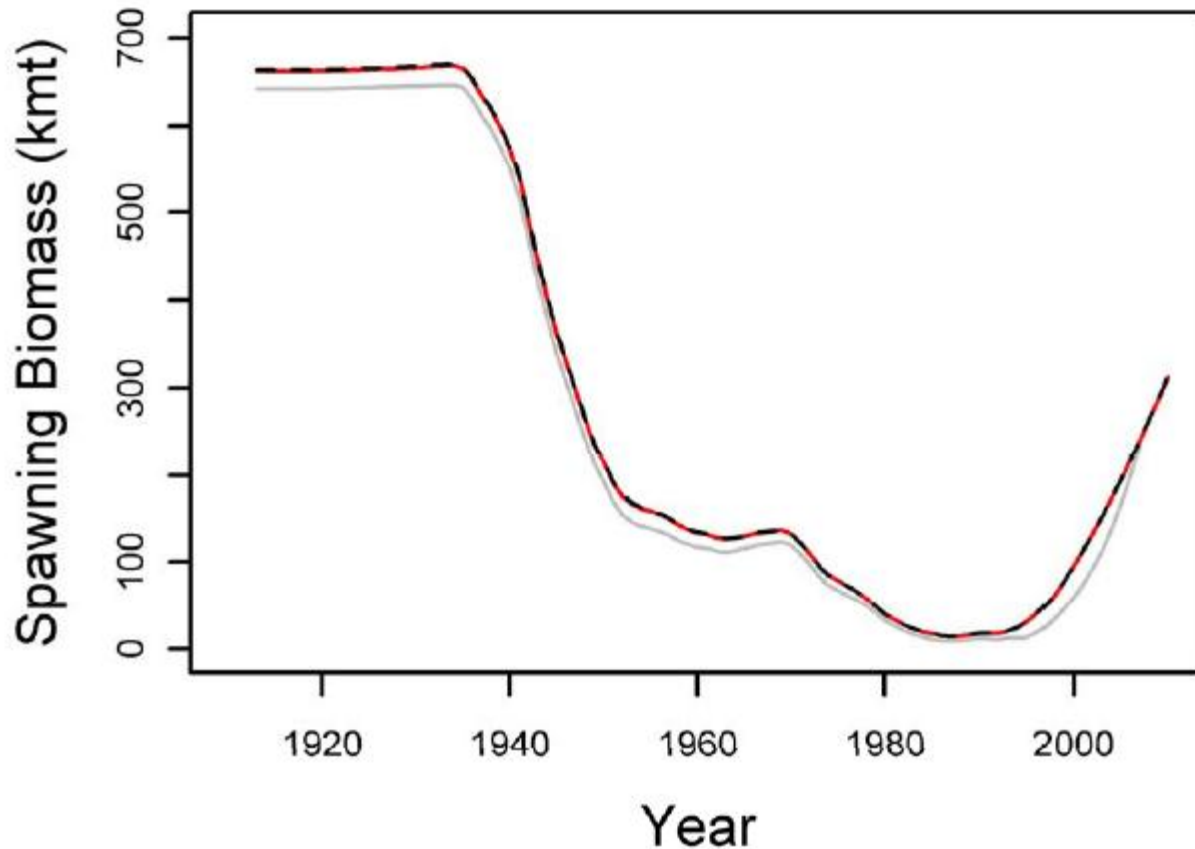
- Not overfished: 59% of SSBMSY
- No overfishing: 72% of FMSY
- Will not rebuild by 2014
- 2013 ABC: ~1625 mt

# Witch Flounder



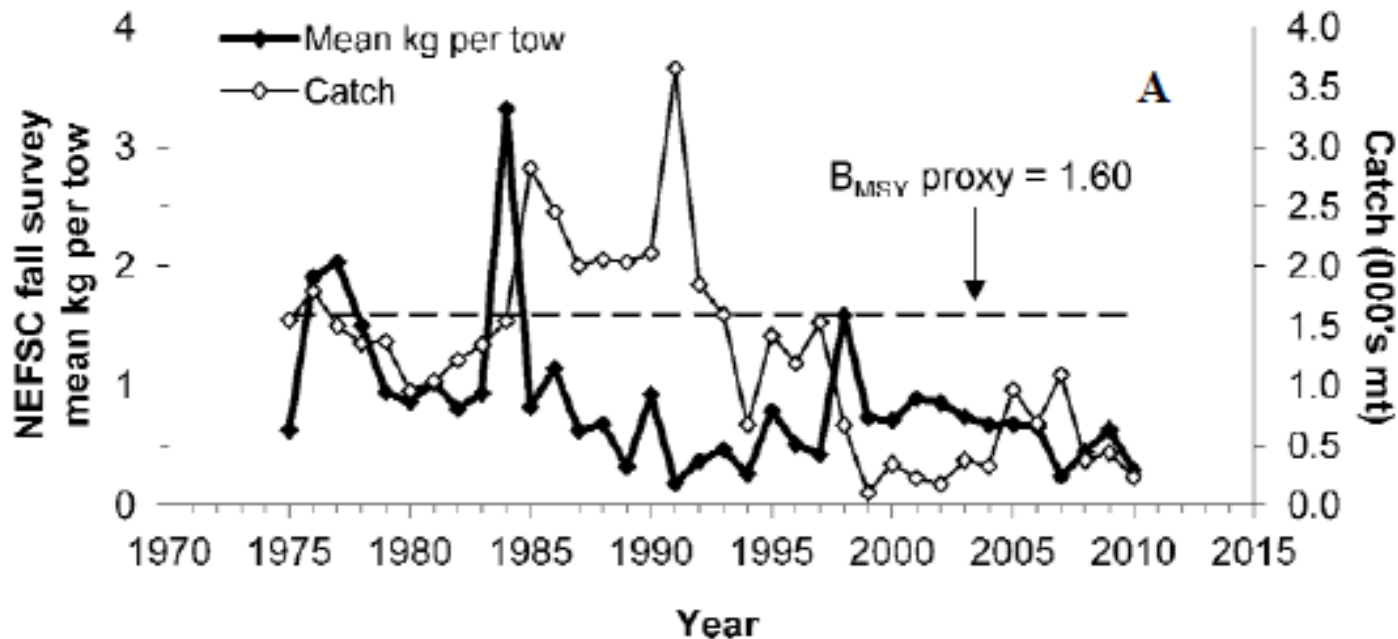
- Overfished: 41% of SSBMSY
- Overfishing: 174% of FMSY
- 2013 ABC: ~950 mt

# Redfish



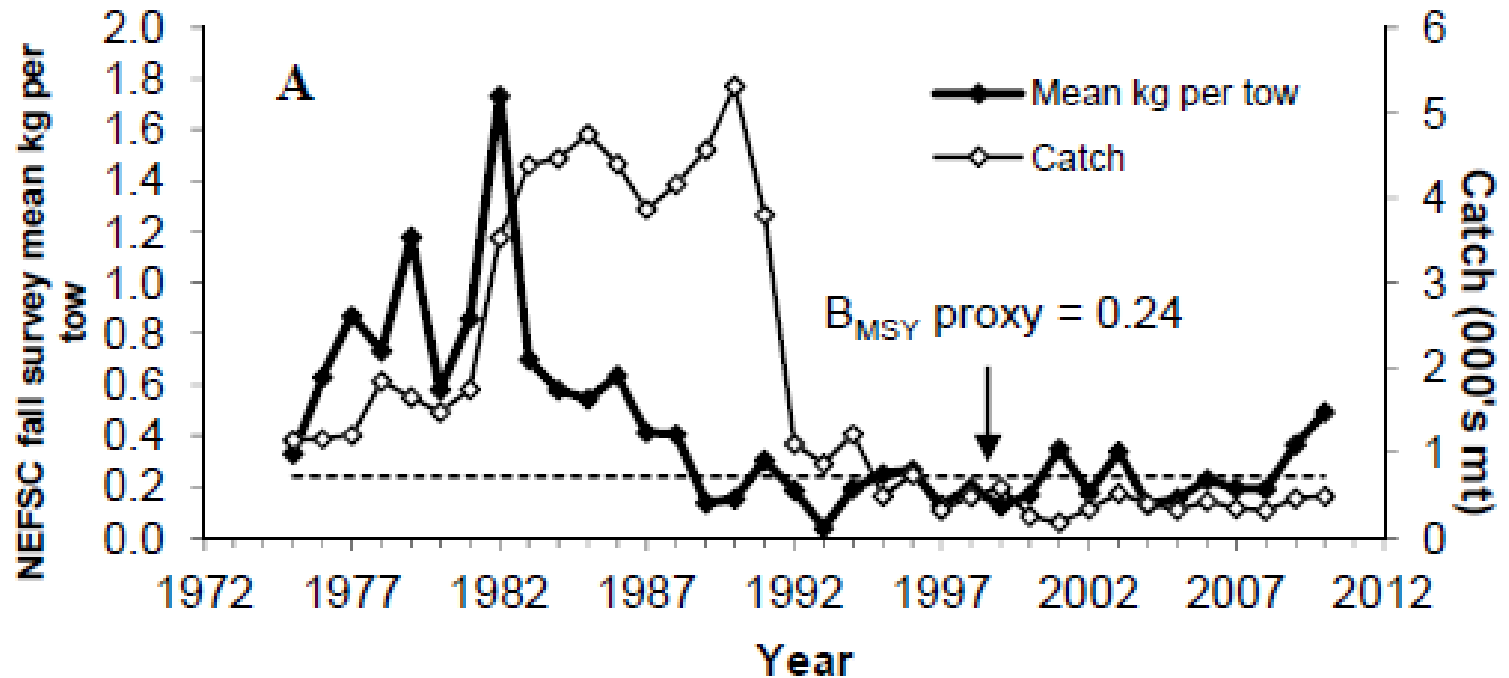
- Rebuilt: 132% of SSBMSY
- No overfishing: 1.5% of FMSY
- 2013 ABC: ~10,804 mt

# GOM/GB Windowpane Flounder



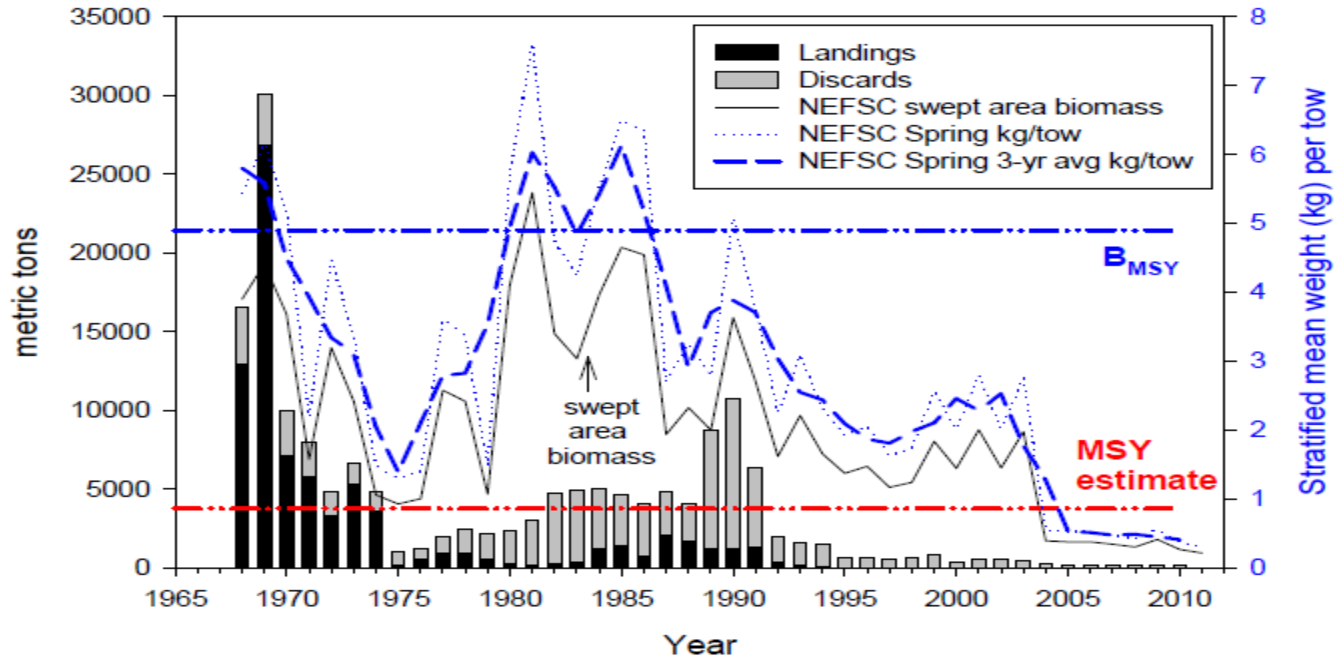
- Overfished: 29% of SSB<sub>MSY</sub>
- Overfishing: 116% of F<sub>MSY</sub>
- 2013 ABC: ~190 mt

# SNE/MAB Windowpane Flounder



- Rebuilt: 126% of SSBMSY
- Overfishing: 107% of FMSY
- 2013 ABC: ~750 MT

# Ocean Pout



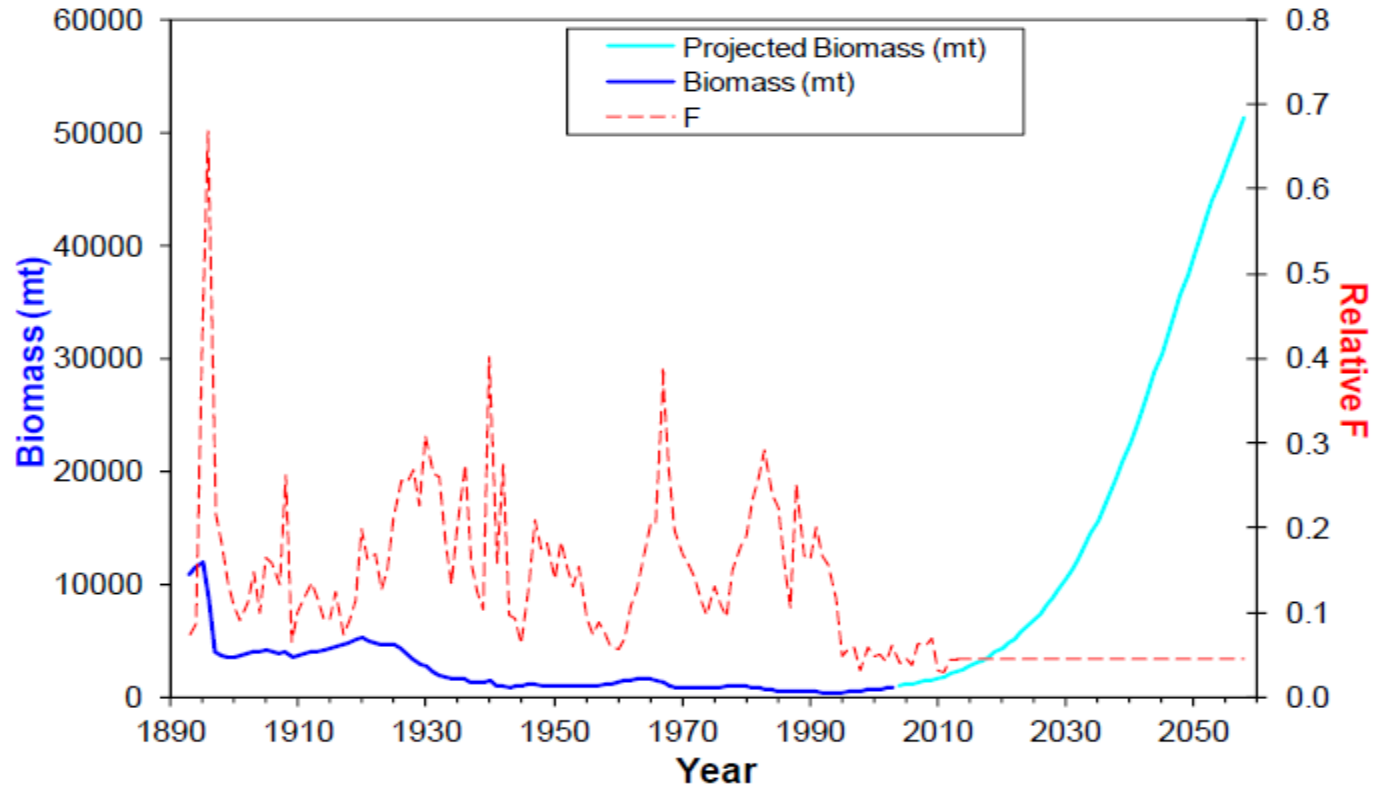
- Overfished: 8% of BMSY
- No overfishing: 41% of FMSY
- 2013 ABC: ~

# Wolffish

- Overfished: 29% of SSBMSY
- No overfishing: 21% of FMSY
- 2013 ABC: ~ 70 mt

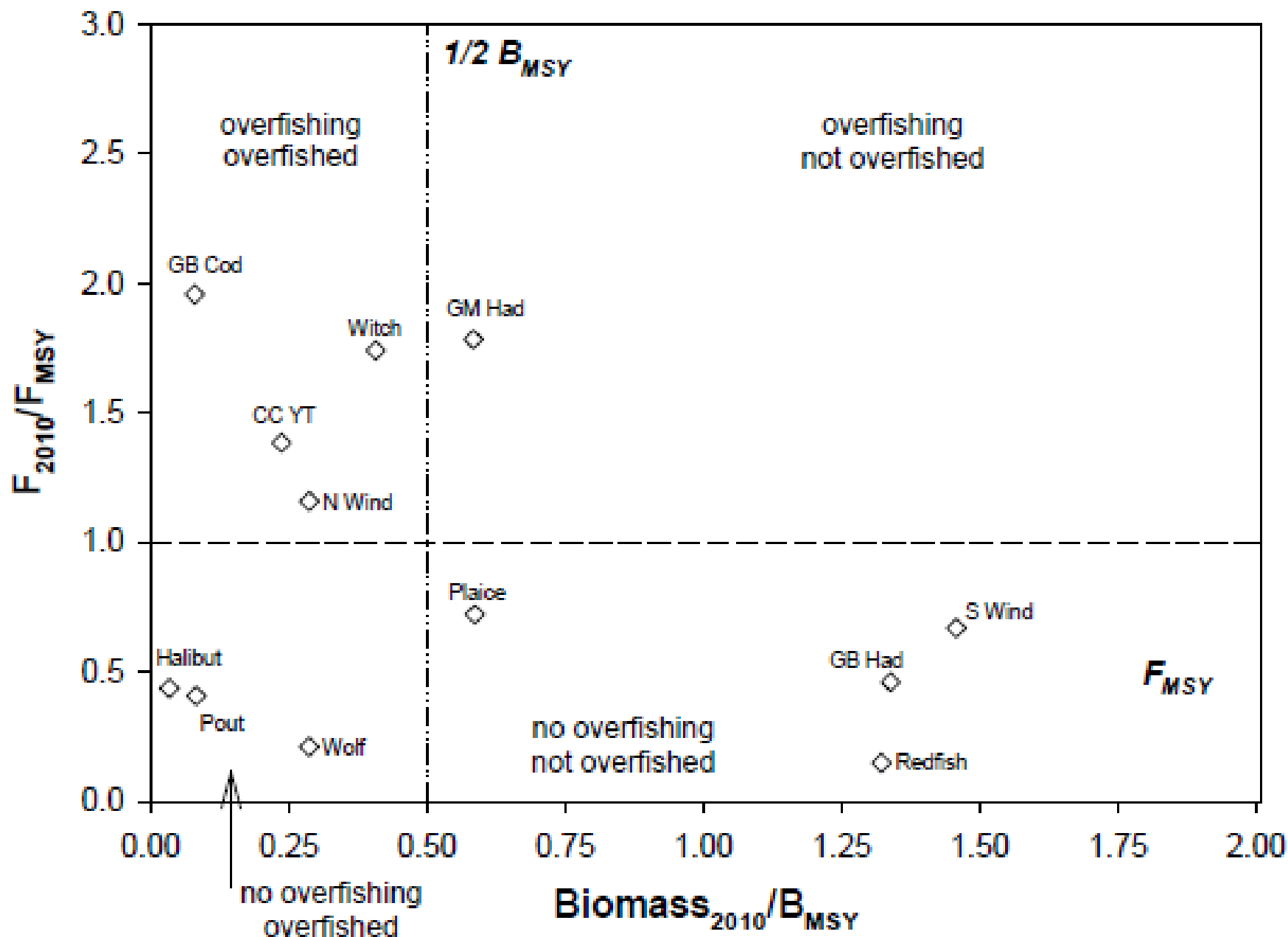


# Atlantic Halibut

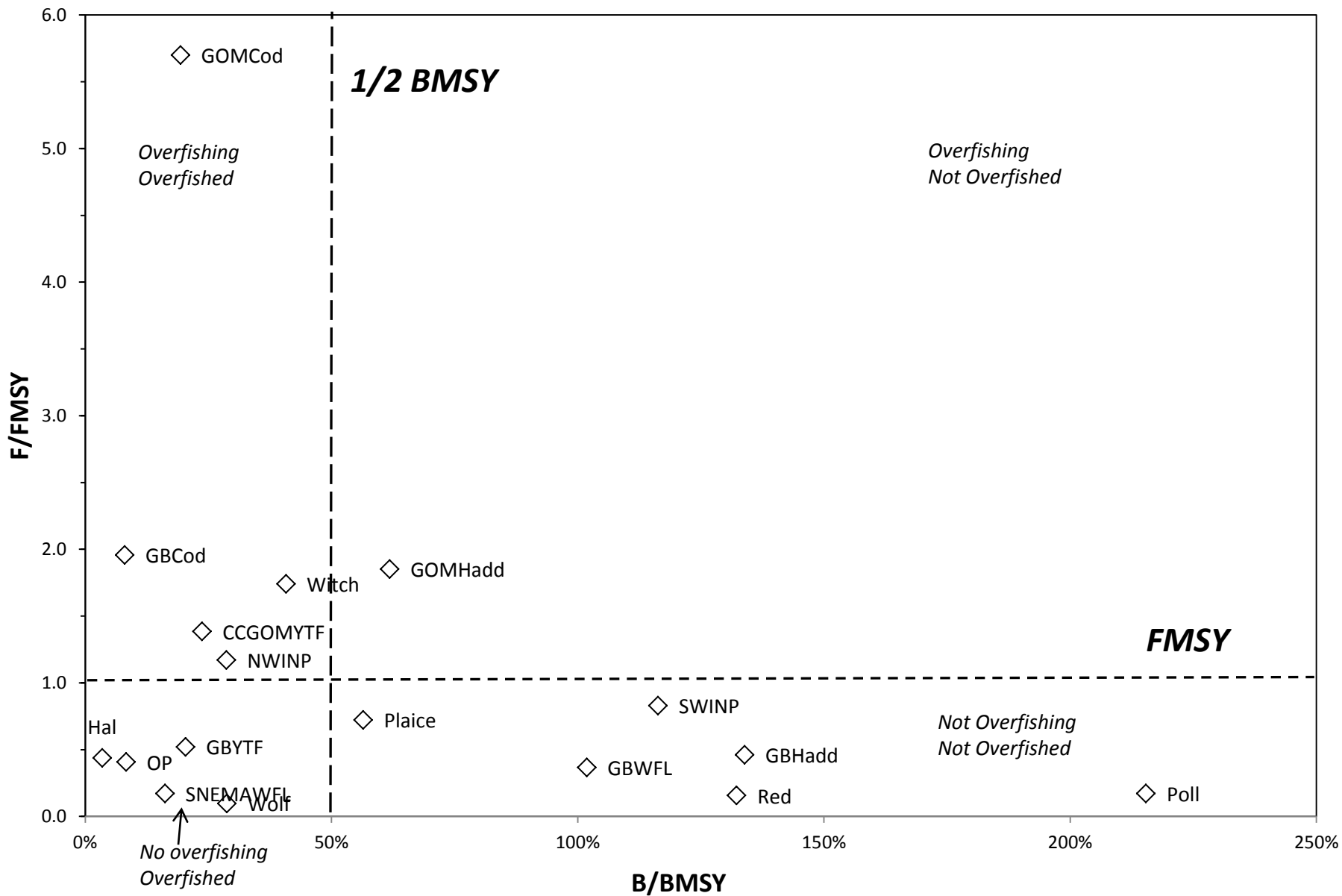


- Overfished: 3.5% of SSBMSY
- No overfishing: 44% of FMSY
- 2013 ABC: ~100 mt

# 2010 Groundfish Stock Status



# Groundfish Stock Status



Questions?